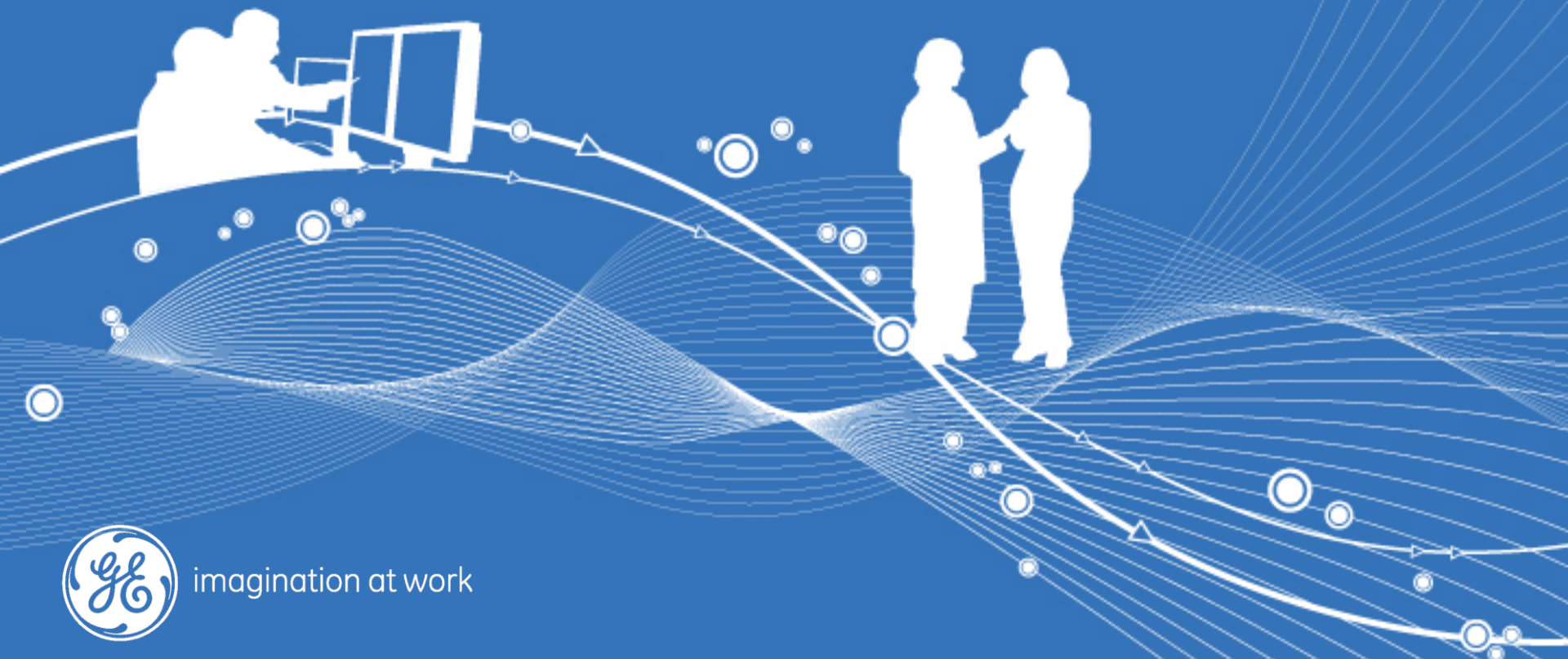


GE Healthcare

Centricity EDI Services: 5010 Update



imagination at work

DISCLAIMER ON POWER POINT PRESENTATIONS ON PRODUCT FUNCTIONALITY

©2011 General Electric Company – All rights reserved

This does not constitute a representation or warranty or documentation regarding the product or service featured. All illustrations are provided as fictional examples only. Your product features and configuration may be different than those shown. Information contained herein is proprietary to GE. No part of this publication may be reproduced for any purpose without written permission of GE.

DESCRIPTIONS OF FUTURE FUNCTIONALITY REFLECT CURRENT PRODUCT DIRECTION, ARE FOR INFORMATIONAL PURPOSES ONLY AND DO NOT CONSTITUTE A COMMITMENT TO PROVIDE SPECIFIC FUNCTIONALITY. TIMING AND AVAILABILITY REMAIN AT GE'S DISCRETION AND ARE SUBJECT TO CHANGE AND APPLICABLE REGULATORY CLEARANCE.

GE, GE Monogram and Centricity® are trademarks of General Electric Company General Electric Company, by and through its GE Healthcare division

5010 Overview



Mandate Overview

The X12 5010 transactions replace the 4010 HIPAA transactions and are needed to accommodate ICD-10 codes and address other identified issues with 4010

Changes

Impact

New Data Elements/Records and Updated Segments	→	New Storage locations/Processing/Screens Translations Scripts/Tools/PM
Update Data requirements	→	Updated Edits/rejections
Updated Adjudication Systems	→	New Edits/Billing processes

Who's affected?

Customers
Centricity EDI
Trading Partners
Payers

Centricity EDI – 5010 Program Goals

Goal	Action Plan
<p><u>Org. Readiness/Communication</u></p> <ul style="list-style-type: none"> - Assure Alignment; Common Goal - Assure solution meets needs for all groups 	<ul style="list-style-type: none"> - Cross functional team created - Development/Testing Coordination - Limited Availability readiness (GM)
<p><u>Development</u></p> <ul style="list-style-type: none"> - Assess Impact; Define Solution - Meets requirements for all customers; Internal & External - Timeline meeting Objectives - Flexibility 	<ul style="list-style-type: none"> - Gap Analysis completed/Requirements Defined and communicated. -Development timelines created with regular Updates - Coordination of Testing
<p><u>Implementation/Support</u></p> <ul style="list-style-type: none"> - Execute on Changes by Delivery date - Minimal Disruptions to our customers - Easily supportable - Measurable Success 	<ul style="list-style-type: none"> - Implementation Plan defined
<p><u>Industry/Readiness</u></p> <ul style="list-style-type: none"> - Understand Moving Parts - Work with key partners 	<ul style="list-style-type: none"> - Attending Industry forums – WEDI/CMS - Working closely with Key Trading Partners <ul style="list-style-type: none"> - Payer Intel – Testing
<p><u>Communication</u></p> <ul style="list-style-type: none"> - Communicate effectively to all stakeholders 	<ul style="list-style-type: none"> - Internal/External Alerts - Customer Communications - Revised Communication Plan

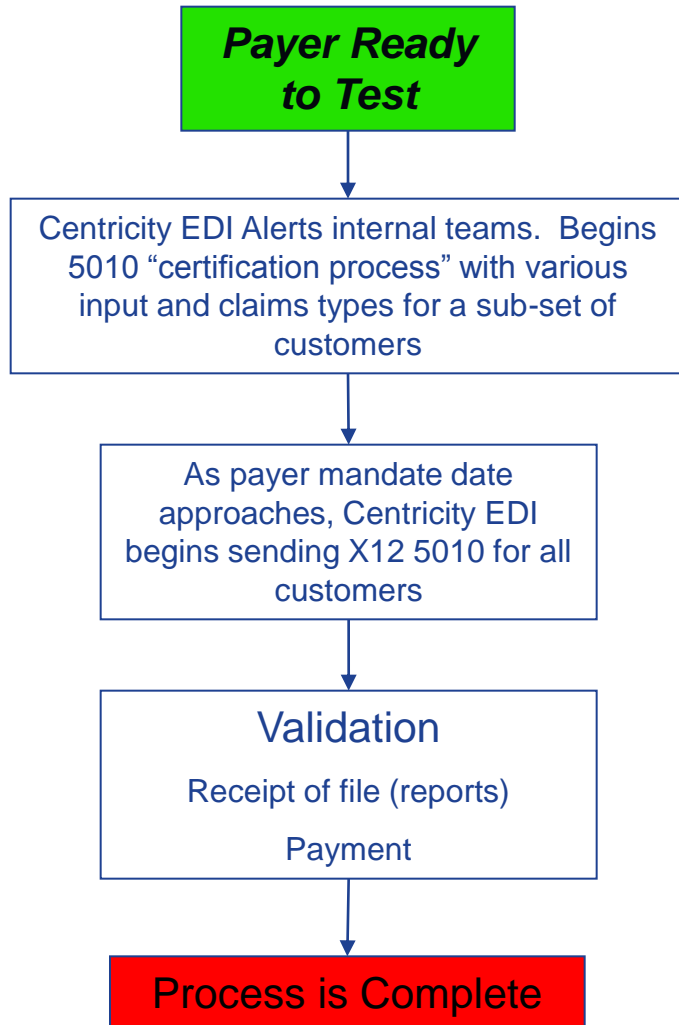
Areas to watch...

- PO BOX in the Service Location Address
- Zip+4 in the Pay-To Provider Address
- Place of Service = 12 (home)
- Prescription Date?
- Anesthesia Billing, Ambulance, Subrogation, Pay-To-Provider, Worker's Comp Billing

Update on Payer Readiness

Target Date	Activity
May 2010	Centricity EDI began Trading Partner Readiness Calls -Repeated calls every 30 days to 90 days
Summer 2010	Continued Payer Calls, but received very little information. One payer indicated readiness soon; Highmark (PA BCBS)
August – December 2010	<ul style="list-style-type: none"> • Began testing with Highmark (PA BCBS) <ul style="list-style-type: none"> -Tested various billing specialties & input formats (4010 & 5010). -Mid-Oct = Highmark Production! • All payers contacted for 5010 readiness
February 2011	<ul style="list-style-type: none"> • 30 of 160 payers indicate readiness to test, but all require testing in April with the “Errata” Version • Currently TESTING with: <ul style="list-style-type: none"> -Noridian (Medicare intermediary for several states in mid-west and west) -Emdeon • Currently PRODUCTION with: <ul style="list-style-type: none"> • KS Medicaid • Highmark BCBS • Still only 2 payers in production!
Q2 2011	Most payers available for testing

Electronic Claims Strategy



Assumptions/Clarifications

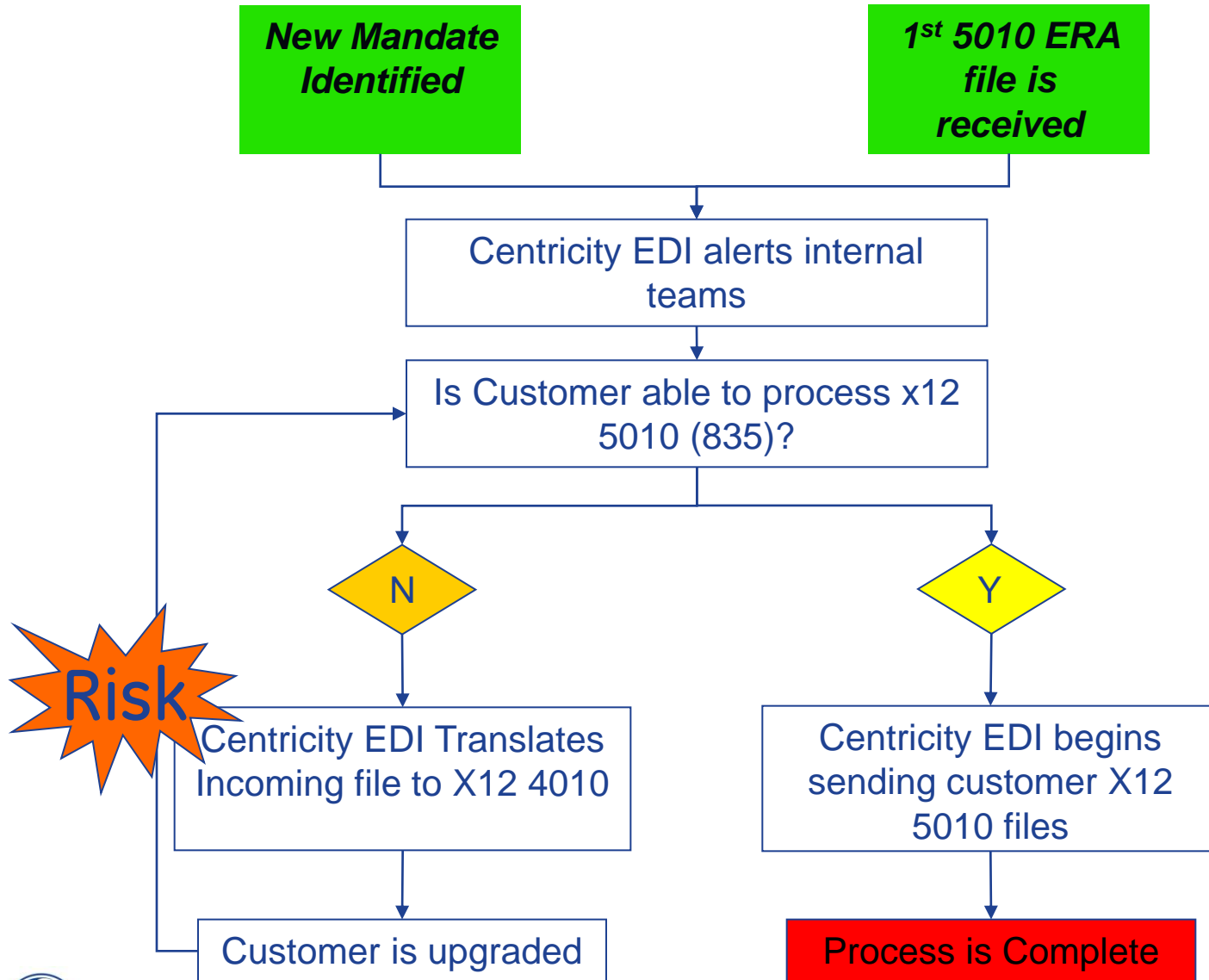
- *Centricity EDI Can translate X12 4010 TO X12 5010 most of the time*

- *Centricity EDI Can translate X12 5010 TO X12 4010 all the time*

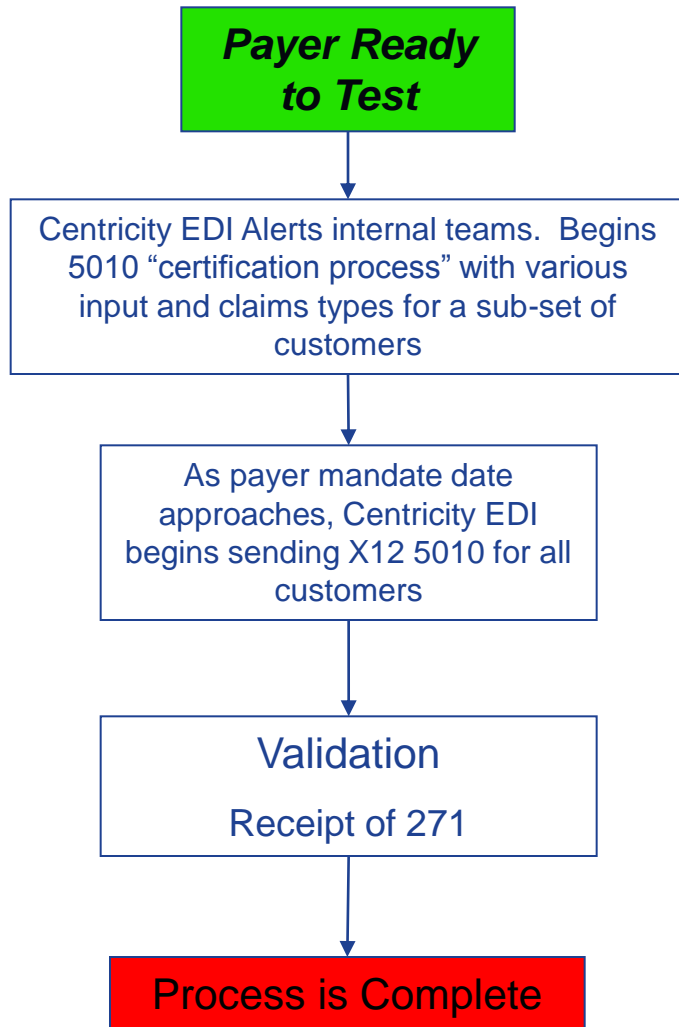
- *After your CPS upgrade, Centricity EDI does not need to make customer set up changes to accept updated versions of Inputs.*

- *Centricity EDI will begin sending X12 5010 transactions to payers as payers are ready and/or mandate it*

Electronic Remit Strategy



Eligibility Strategy



-Assumptions/Clarifications

- Centricity EDI Can translate X12 4010 TO X12 5010 most of the time for BOTH 270 and 271

-Centricity EDI Can translate X12 5010 TO X12 4010 all the time

-After your CPS upgrade, Centricity EDI does not need to make customer set up changes to accept updated versions of Inputs.

-Centricity EDI will begin sending X12 5010 transactions to payers as payers are ready and/or mandate it

Useful Resources

5010 Resources

- Government Bills – legislation
www.gpoaccess.gov/bills/index.html
- HHS Web Site – regulatory
www.aspe.hhs.gov/admsimp/index.shtml
- Workgroup for Electronic Data Interchange (WEDI)
www.WEDI.org
- Washington Publishing
www.wpc-edi.com/registry
- ANSI X12
www.x12.org



imagination at work

ICD-10 Resources

- General Information
<http://www.ahima.org/icd10/>



Questions?

